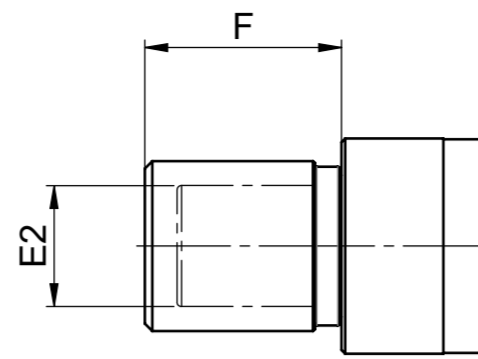
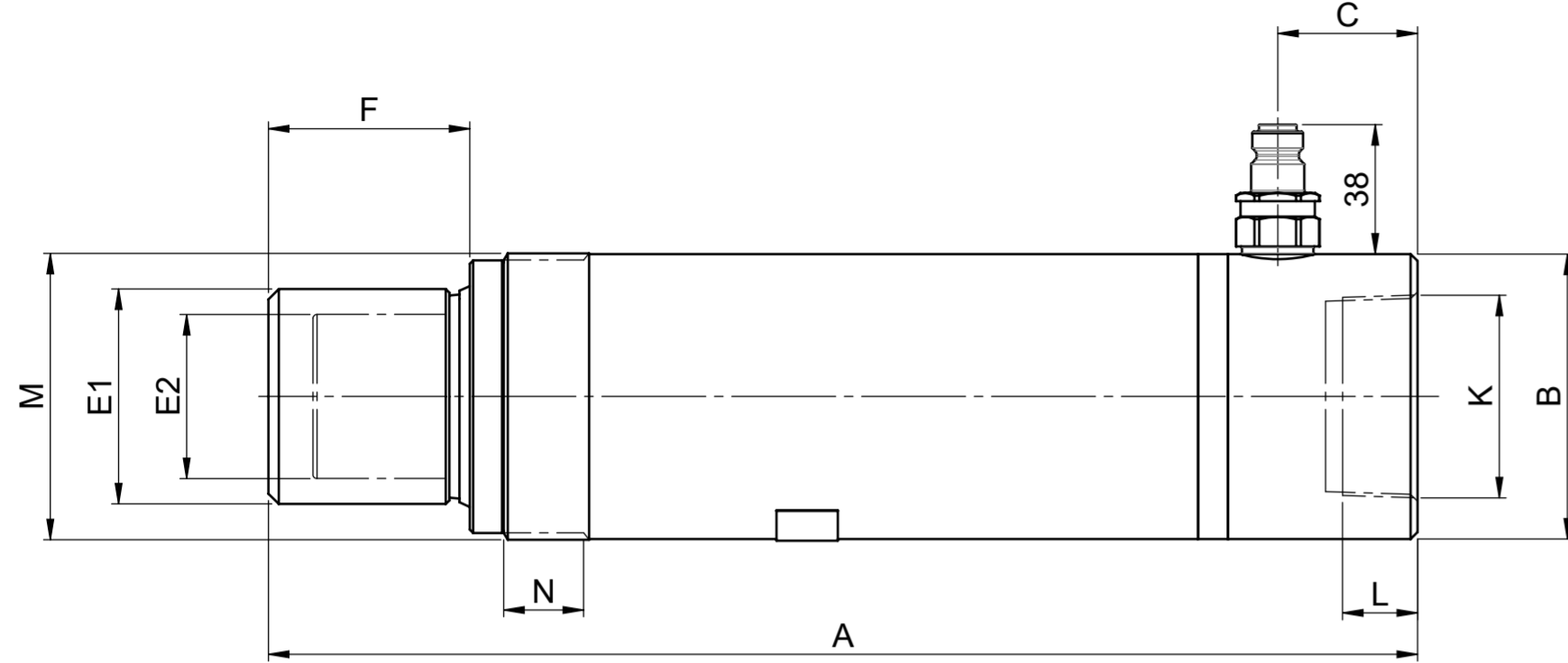


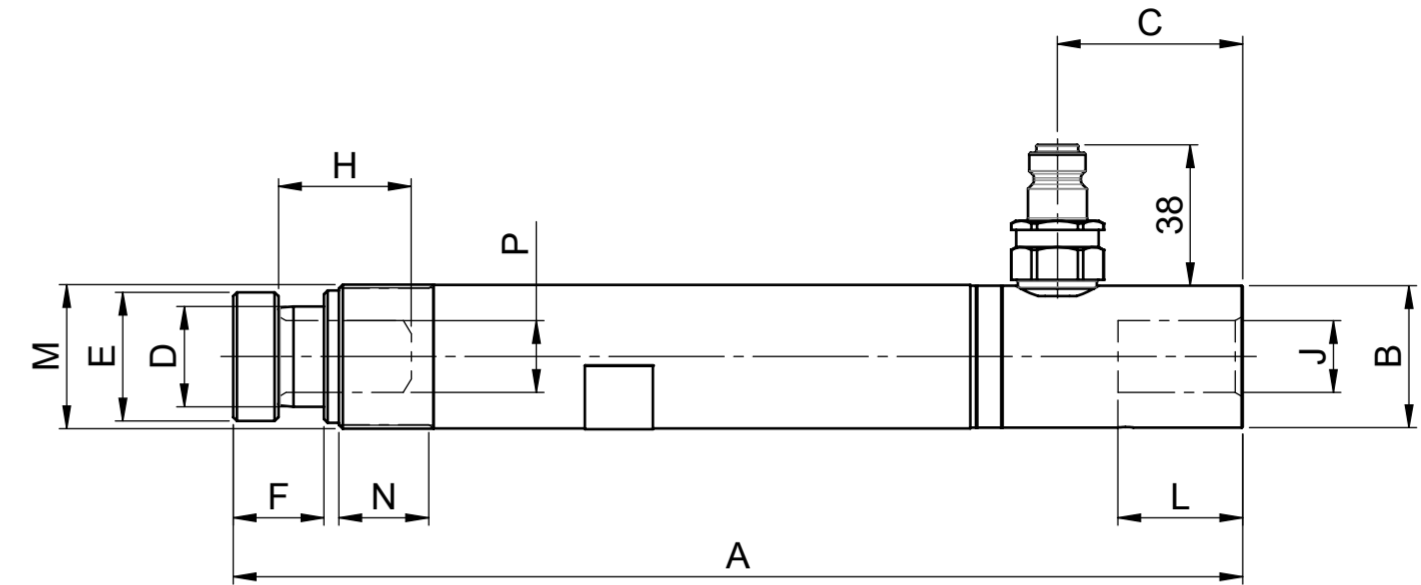
CFU2010C - CFU2510C



CF110 - CF310
CF110BL - CF310BL



CF120 - CF320
CF120BL - CF320BL



CF104 - CF204
CF104BL - CF204BL

Modell	Artikelnummer / Part number	Max arbetstryck / Max working pressure MPa	Kapacitet/ capacity kN	Slaglängd/ stroke mm	Kolvarea/ piston area cm ²	Slagvolym/ stroke volume cm ³	A mm	B Ø mm	C mm	D mm	E1 Ø mm	E2 Ø mm	F mm	H mm	J mm	K	L mm	M	N mm	P Ø mm	Vikt/ weight kg
CF104B	27485	70	49	127	7,1	90	267	37,5	49	26,5	34	---	25	33	19	---	33	1 1/2" -16 UN	25	19	1,7
CF204B	27486	70	49	200	7,1	142	340	37,5	49	26,5	34	---	25	33	19	---	33	1 1/2" -16 UN	25	19	2,4
CF110C	43829	70	111	150	15,9	239	321	56,5	43	38	45	32,25	52,5	---	---	1 1/4"-11 1/2 NPT	22	2 1/4" -14 UN	27	---	4,7
CF210C	43830	70	111	200	15,9	318	372	56,5	43	38	45	32,25	52,5	---	---	1 1/4"-11 1/2 NPT	22	2 1/4" -14 UN	27	---	5,5
CF310C	43831	70	111	300	15,9	477	474	56,5	43	38	45	32,25	52,5	---	---	1 1/4"-11 1/2 NPT	22	2 1/4" -14 UN	27	---	7
CF120A	24178	70	232	127	33,2	422	337	84	41	60	63	48	59	---	---	2"-11 1/2 NPT	22	3 5/16" -12 UN	25	---	10,2
CF220A	24973	70	232	200	33,2	664	410	84	41	60	63	48	59	---	---	2"-11 1/2 NPT	22	3 5/16" -12 UN	25	---	12,4
CF320A	24974	70	232	300	33,2	996	510	84	41	60	63	48	59	---	---	2"-11 1/2 NPT	22	3 5/16" -12 UN	25	---	16
CF104BL*	51184	70	49	127	7,1	90	267	37,5	49	26,5	34	---	25	33	19	---	33	1 1/2" -16 UN	25	19	1,7
CF204BL*	51185	70	49	200	7,1	142	340	37,5	49	26,5	34	---	25	33	19	---	33	1 1/2" -16 UN	25	19	2,4
CF110BL*	51188	70	111	150	15,9	239	321	56,5	43	38	45	32,25	52,5	---	---	1 1/4"-11 1/2 NPT	22	2 1/4" -14 UN	27	---	4,7
CF210BL*	51189	70	111	200	15,9	318	372	56,5	43	38	45	32,25	52,5	---	---	1 1/4"-11 1/2 NPT	22	2 1/4" -14 UN	27	---	5,5
CF310BL*	51190	70	111	300	15,9	477	474	56,5	43	38	45	32,25	52,5	---	---	1 1/4"-11 1/2 NPT	22	2 1/4" -14 UN	27	---	7
CF120BL*	51194	70	232	127	33,2	422	337	84	41	60	63	48	59	---	---	2"-11 1/2 NPT	22	3 5/16" -12 UN	25	---	10,2
CF220BL*	51195	70	232	200	33,2	664	410	84	41	60	63	48	59	---	---	2"-11 1/2 NPT	22	3 5/16" -12 UN	25	---	12,4
CF320BL*	51196	70	232	300	33,2	996	510	84	41	60	63	48	59	---	---	2"-11 1/2 NPT	22	3 5/16" -12 UN	25	---	16
CFU2010C	43837	70	111	200	15,9	318	387	56,5	43	38	---	32,25	67	---	---	1 1/4"-11 1/2 NPT	22	2 1/4" -14 UN	27	---	5,3
CFU2510C	43838	70	111	250	15,9	398	437	56,5	43	38	---	32,25	67	---	---	1 1/4"-11 1/2 NPT	22	2 1/4" -14 UN	27	---	6

* BL = Blackline, cylinders adapted for harsh environments with high risk of corrosion and condensation

DENNA RITNING ÄR REHOBOT AB:s EGENDOM. SKYDDAD ENLIGT GÄLLANDE LAG. THIS DRAWING IS THE PROPERTY OF REHOBOT AB. PROTECTED BY PREVAILING LAW.

Issue	Change	Position	Date	Sign.
5	Omrätad. BL tillkom		2017-07-13	GB

Material	Blank, dimension	Heat treatment	Surface treatment
Permissible deviations for dimensions without indication of tolerances Machined parts acc.SS-ISO-2768-1		Castings acc.SS-ISO-8062	Fuse welded constr. acc.SS-EN ISO 13920
Designed by GB1	Date 2016-11-23	Product Måttitning Dimensional drawing	Surface roughness unless specified Ra µm
Prod. appr. RJ 2017-08-22	Design appr. CS 2017-08-15	Scale 1:2	Tol system acc. ISO Replaces
REHOBOT		Title CF/CFU - Cylinders	Replaced by
			B-24975